

Features

- Open shelf offers easy access to storage, while interior shelf provides ample space for extra toilet paper
- Three-way adjustable slow-close door hinges for easy cabinet access
- Finish-matched 10"-deep cabinet interior
- Customize your storage with optional accessories such as floor liners, drawer organizers, and perfectly sized containers (sold separately)
- Coordinates with K-33558 upgraded hardware finishes (sold separately)

Material

- Solid wood and moisture-resistant MDF
- Painted exterior

Installation

- Easy installation – no special tools required

Included Components

Additional Components:

Wall-mounting hardware



Codes/Standards

EPA TSCA Title VI/CARB P2



KOHLER® One-Year Limited Warranty

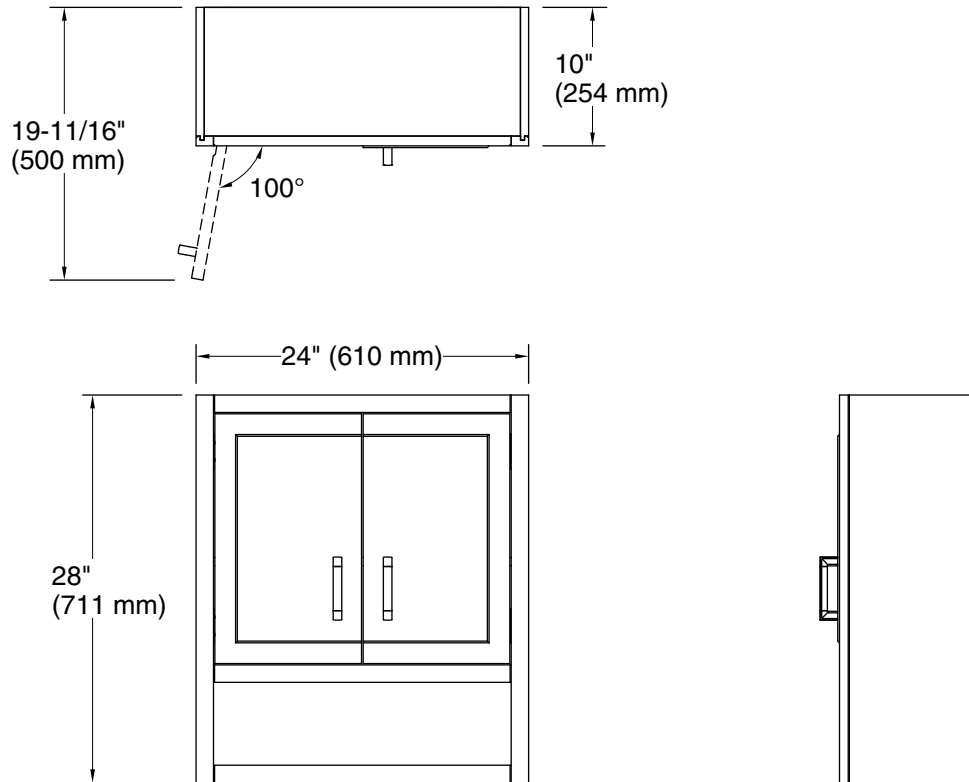
See website for detailed warranty information.

Available Colors/Finishes

Color tiles intended for reference only.

| Color | Code | Description |
|-------|------|-------------|
|-------|------|-------------|

| | | |
|---|-----|-------------|
|  | 0 | White |
|  | 1WT | Mohair Grey |



Technical Information

All product dimensions are nominal.

Notes

Install this product according to the installation instructions.